



boston
below deck
pool cover reel

Installation & Operating
Instructions



Congratulations on buying a **Boston Below Deck Pool Cover Reel** – another clever pool cover reel solution.

Our below deck reel system gives you a hidden, easy to use and very reliable pool cover reel. You will be the envy of your neighbours. Leisuretime Spa & Pool Covers has been manufacturing pool covers and reels in New Zealand for over 30 years. We have utilised this depth of local experience to design and manufacture an underground reel well suited to local requirements. The result is a high quality, functional and durable reel solution.

Chris Graham - Owner

Enjoy.



Application

A Leisuretime Boston Below Deck Reel is for use where there is a suitable cavity below the deck at one end of the pool. The cavity below the deck must be above the ground and have sufficient space to accommodate the rolled up cover.

Specifications:

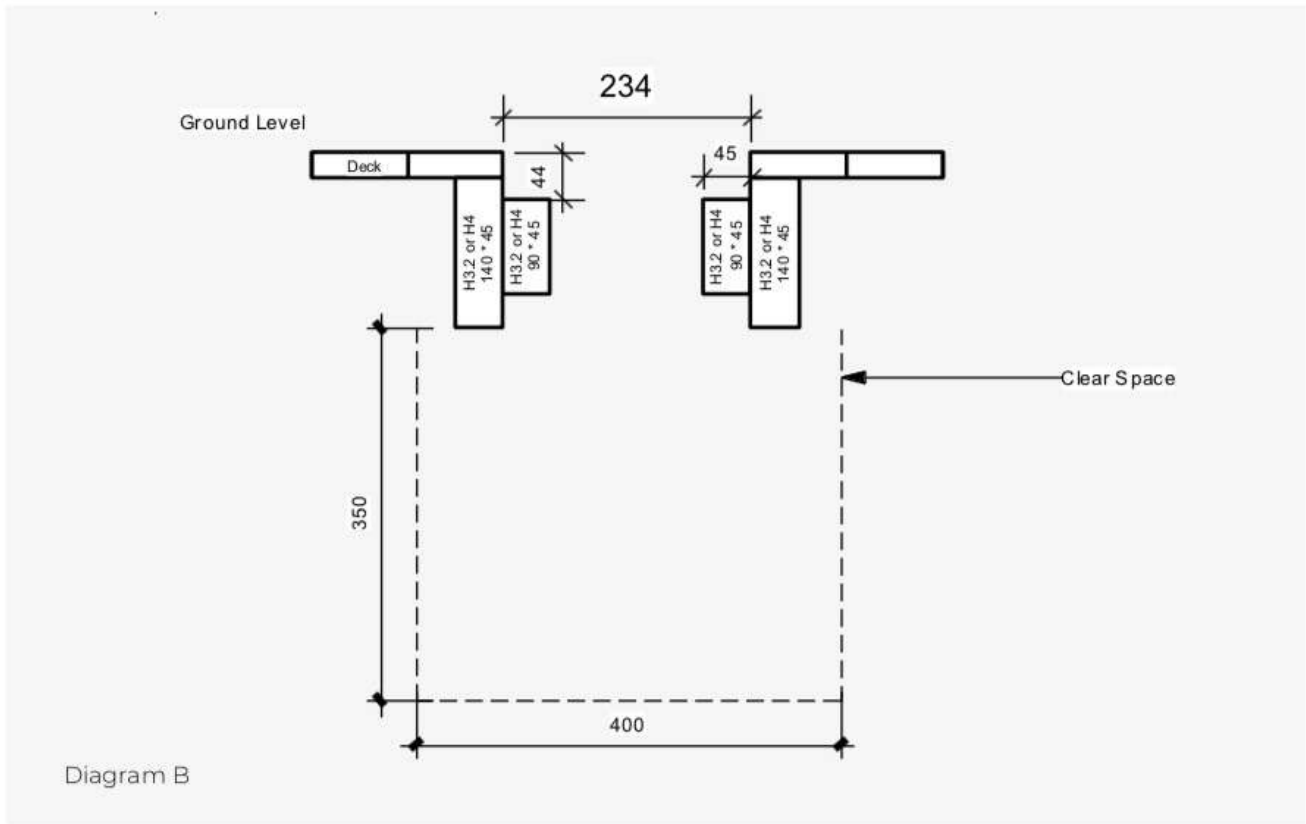
Reel Gearbox Reduction Ratio	2:1
Reel Models	3.2 / 3.7 / 4.2 / 4.7 / 5.2
Lid	Extruded Aluminium / Anodised
Operation	Manual
Cover Lengths	Suitable for covers up to 12.0m
Cover Types	Suitable for Solar and Thermal Blankets
Enclosure	None
Manufacturing location	New Zealand

Description

Boston Below Deck Pool Cover Reel features an integrated trap door style lid and a below deck reel mechanism.



3 – Deck Cross Section



4 – Deck Opening Requirements

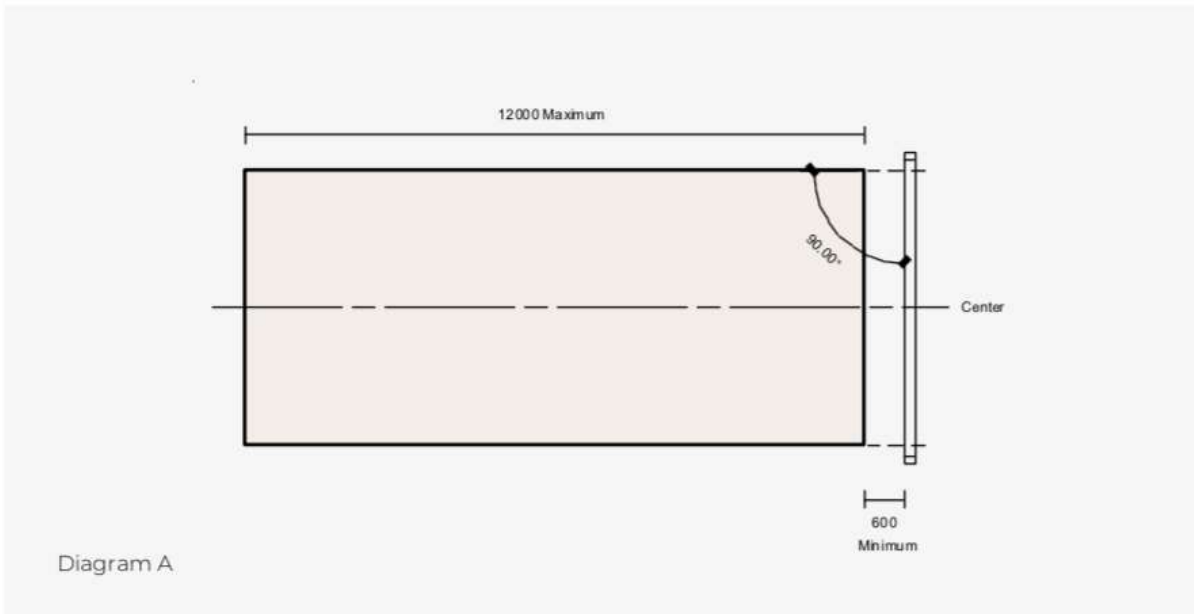
Model	Max Cover Width	Deck Opening Length	Deck Opening Width
BBD 3200	3200 mm	3710 mm	234 mm
BBD 3700	3700 mm	4220 mm	234 mm
BBD 4200	4200 mm	4720 mm	234 mm
BBD 4700	4700 mm	5220 mm	234 mm
BBD 5200	5200 mm	5735 mm	234 mm
BBD Custom	Variable	Cover Width + 500mm (250 mm each side)	234 mm

Note: Step Outs

If there is a step out protruding from the side of the main area of the pool then we recommend the cover for this step out be separated from the main cover and removed/placed by hand.

Installation

1 - Reel Location / Orientation



2 - Pit Drainage

- Drainage is critical
- The Boston Below Deck reel cannot be flooded
- Flooding is likely to destroy the gearbox
- Below Deck Reels are generally above ground and therefore not subject to flooding
- However in circumstances where the reel mechanism is below ground level there must be drainage
- How the Boston Below Deck reel is drained is the responsibility of the installer
- Drainage methods will be determined by site requirements
- The owner is required to check regularly to ensure the drainage system is not blocked

5 – Procedure

- Build deck to include the specified deck opening
- Construct the 140 x 45 mm (6" x 2") sides and ends
- Construct 90 x 45 mm (4" x 2") ledges on long sides only (not on ends)
- Mount brackets to the end of the deck opening
- Fit reel
- Fit Lid

6 – After installation

- Seal off lid if acid washing any surrounding concrete
- Seal off the lid if surrounding decking is still "bleeding"
- If acid wash or deck bleeding comes in contact with the lid or reel rinse thoroughly
- Protect the lid from concrete slurry
- Protect the lid from accidental damage during ongoing construction activity



Covering the pool

- Ensure that there is nothing in the pool (balls, toys, etc.) that could hinder correct movement of the cover
- Open the reel lid
- Reach down and pull the boom on the leading edge of the cover up and out of the reel enclosure
- Connect the pull out rope
- Walk with the end of the pull out rope to the far end of the pool.
- Standing at the centre of the far end of the pool pull the cover down the pool
- Again if the cover snags then stop and clear before continuing
- Remove and store the reel handle
- Close the reel lid

Precautions

It is very important to check that there is no-one in the pool before closing the cover.

Always watch the pool carefully while operating the cover.

Never allow children to operate the reel.

Swimming under the cover is strictly prohibited.

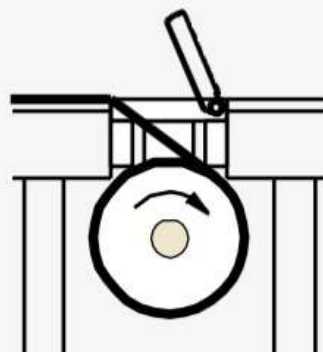
Restrict users to those who have read the operating instructions



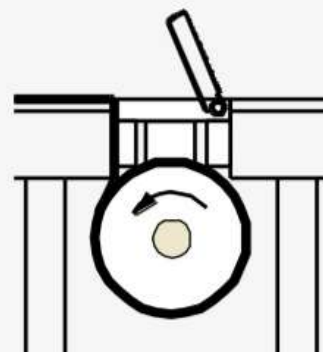
Daily cover operation

Retracting the cover

- Lift the lid
- Engage the handle
- Lift the end of the cover up and over the end of the pool
- Rotate the handle in the direction that winds the cover over the tube and down the back
- When the flotation boom gets to the reel end of the pool, stop winding and lift the boom up and over the end of the pool
- Continue rotating the handle until the cover is fully below deck
- Shut the lid carefully
- If the cover snags then stop and clear the problem before continuing



Correct Rotation



Incorrect Rotation

Diagram C

General

1. Water Quality

Water quality must be checked regularly.

Extremes of water chemistry can result in damage to the cover and reel.

We advise that water chemistry is monitored by a professional pool service.

2. Reel Maintenance

The gearbox is a sealed unit and requires no maintenance.

The lid requires no maintenance.

All that is required is that you keep both the lid and the enclosure clean and the drainage in working order.

3. Winterising/Cleaning

Regularly clean the lid, the lid hinges and the lid rails. Ensure they are free off rubbish and stones.

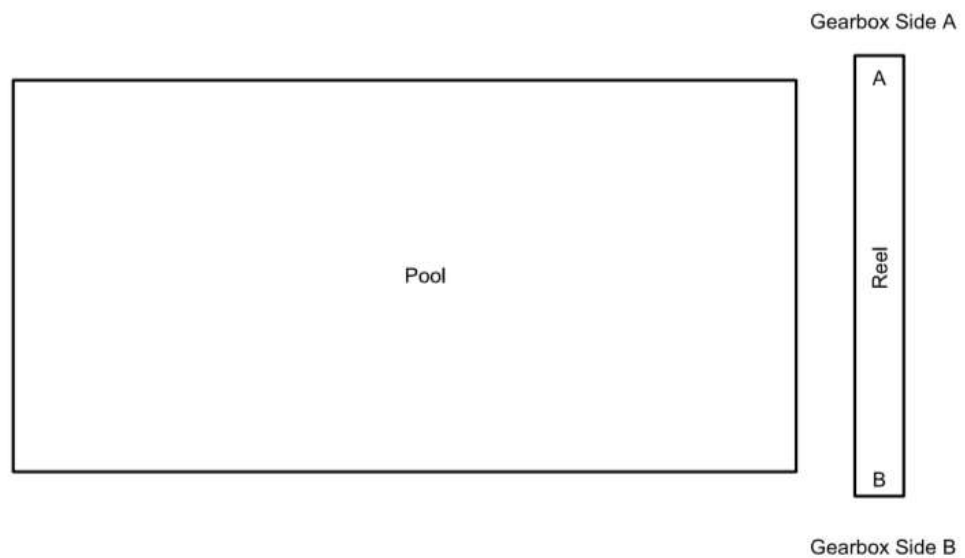
The reel mechanism must never be submerged so if there is any risk of flooding then detach the cover and lift the reel mechanism out to store safely when not required.

Periodically check through the year to ensure the drainage (if any) is not blocked.

4. Scope of Use

Boston Below Deck Pool Cover Reels are designed for installation on private pools. Any other use (public or semi-public pools) must be authorised

Boston or London Gearbox Side



Notes

- These reels can be specified with the gear box (and the winding handle) at either end
- The decision as to which end to locate the gearbox is site specific
- This decision about gearbox end has to be made prior to manufacture so we configure the reel correctly
- When deciding on reel end consider access to the reel
- Consider the need for the operator to stand above the gearbox
- Consider the space needed to rotate the handle (a radius of about 250mm centred on the gearbox)